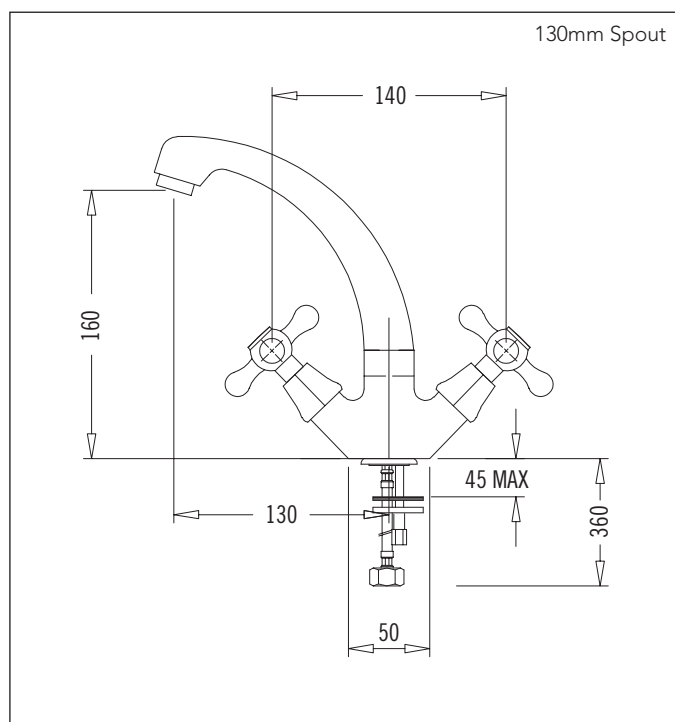


1 Hole Basin Set



Code: NV 1BASIN
Finish: Chrome, Chrome/Gold
Mechanism: Standard Washer

- Range available with half-turn ceramic mechanism on request (add OPTION CERAMIC to code)

Spout: Swivel 360°

- Normally supplied with 130mm (short) spout
- For large spout (approximately 30mm taller and 65mm longer reach) add SP NV SPOUT XXL to code
- For Chrome/Gold add OPTION GOLD NV to code

Aerator supplied

Stainless Steel Inlet Hoses:

Hot: I/D: 6mm Size: M10 x 1/2" BSP
Length: 300mm

Cold: I/D: 6mm Size: M10 x 1/2" BSP
Length: 300mm

Metal Base Ring supplied with O-ring seal

Mounting Hardware: Stud: 8mm
Nut: 11mm A/F
Horseshoe Washer

Installation Hole Diameter: Minimum: 32mm
Maximum: 37mm
Recommended: 34mm

Handy Tip: For very low pressure the standard mechanism will provide a greater flow than ceramic mechanism

Suitable for equal and unequal pressure systems

Recommended Pressure

Operational Range:

Minimum: 15 kPa

Recommended: 600 kPa

Never to Exceed: 1000 kPa

Maximum Operating

Temperature: 70°C

Aquatica Warranty

Aquatica NZ Limited offer, from the date of purchase, a 2 year warranty on handshowers, a 5 year warranty on tapware and accessories and a lifetime warranty on stainless steel sinks.

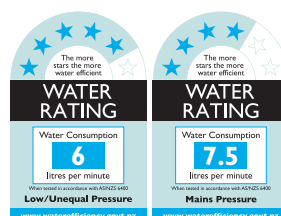
Aquatica NZ Limited warrants that only high quality workmanship and materials have been employed in the manufacture of its tapware, accessories and stainless steel products. If any faulty workmanship or materials is proven during the warranty period, Aquatica NZ Limited will at its own cost repair, or at its option replace, the faulty product.

The guarantee is non-transferable and proof of purchase is required.

The use of spray or abrasive cleaners of any kind will void the warranty. (Tapware should only be cleaned with a mild detergent and a soft damp cloth).

Failure to use an in-line strainer or filter on lines to tapware incorporating a ceramic cartridge or ceramic disc mechanism may also void the warranty.

Every effort has been made to show the products as they will be sold, however, all models and specifications are subject to change without notice.



Aquatica NZ Limited

9 Saunders Place,
Avondale, Auckland.

Tel: 09-828 2068,

Fax: 09-828 2069

Email: info@aquatica.co.nz

or visit our website:

www.aquatica.co.nz